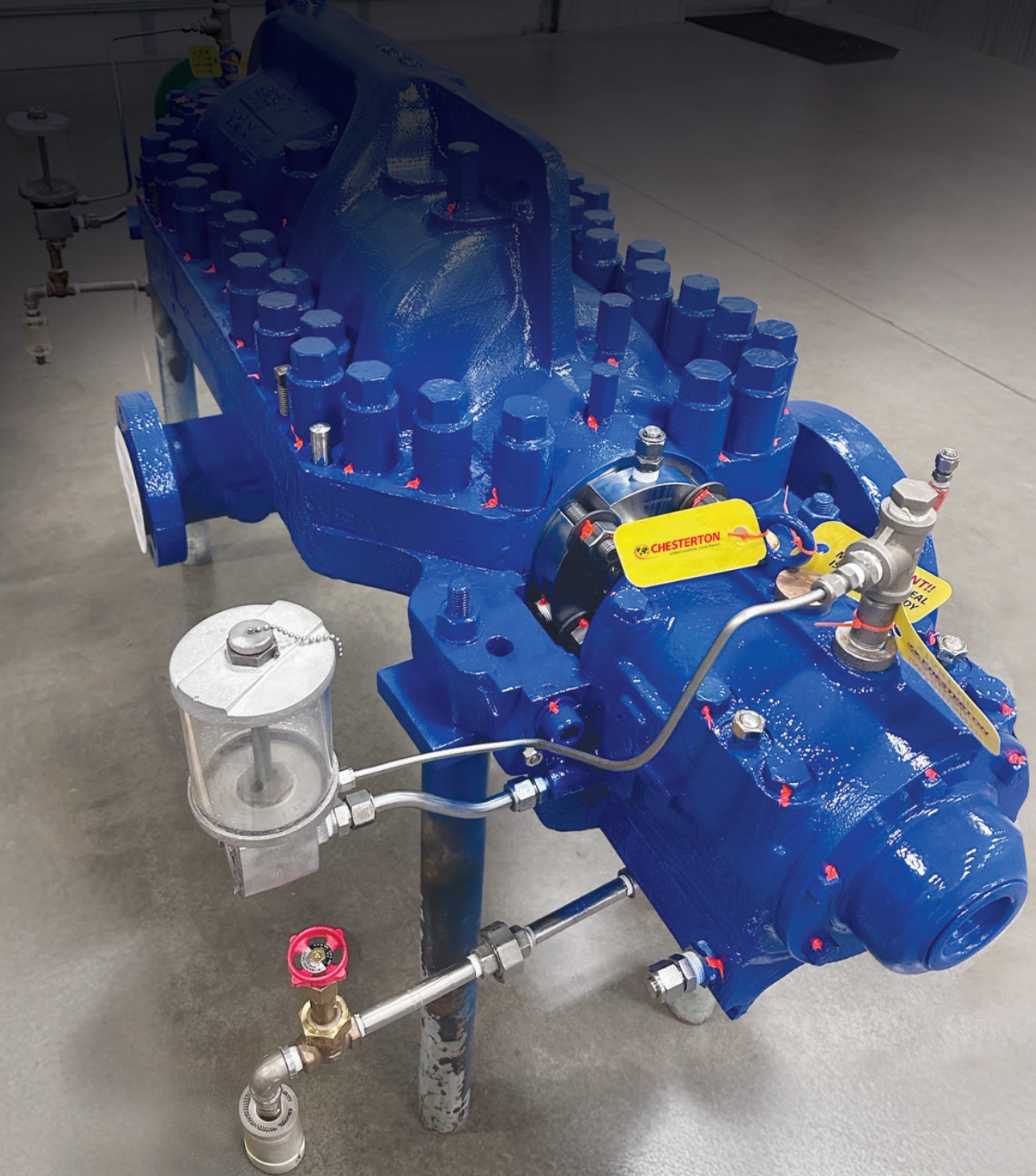


ROTATING EQUIPMENT REPAIR SERVICE CENTERS

CHESTERTON® SERVICES



Quality repair of pumps, gear boxes, blowers, mixers, and more

TURNKEY SERVICES:

- Machining
- Welding
- Balancing
- Field Installation and Commissioning
- Reverse Engineering
- High Performance Sealing Solutions
- ARC Composite Coating Applications
 - Repair castings, and increasing pump efficiency

Pump Repair Services

Our Chesterton team of machinists, technicians, engineers, and millwrights provide the best repair solution on a wide variety of pumps to increase performance. We specialize in not only repairing pumps quickly and reliably to place back into service, but also offering performance upgrades using the latest technology. As the Chesterton family, we offer in-depth knowledge of both pump and seal performance improvement on equipment such as:

- Vertical Pumps (VS1, VS2, VS3, VS4, VS5, VS6, VS7)
- Horizontal and Radial Split Case Pumps (BB1 and BB2)
- Split Case Multi Stage Pumps (BB3, BB4, BB5)
- API Back Pull Out Pumps (OH2, OH4, OH5)
- ANSI Back Pull Out Pumps (OH1 and OH3)

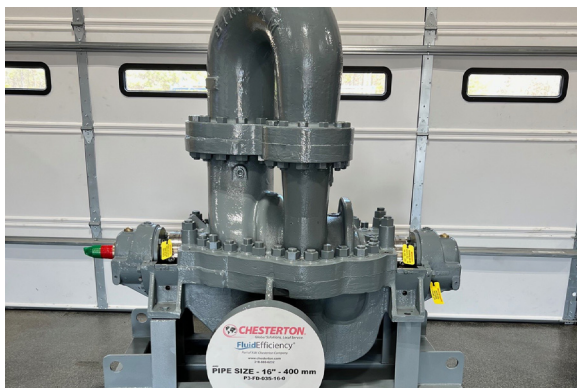
BB1 Horizontal Split Case Pump Repair



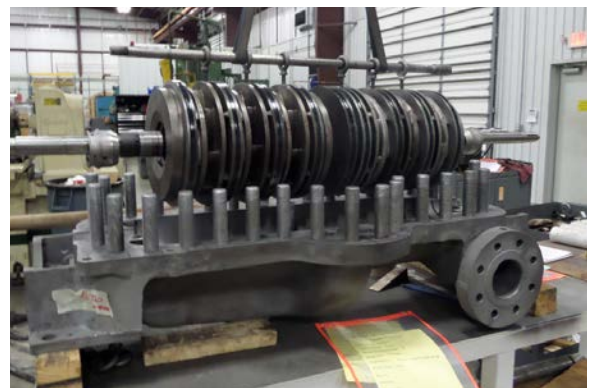
BB2 Radially Split Case Pump Repair



BB3 Multi Stage Pump Repair



BB3 Multi Stage Pump Repair



VS1 Vertical Turbine Pump Repair



VS4 Sump Pump Repair



OH2 Horizontal Pump Repair



VS6 Vertical Can Pump Repair



Before – Repair of Pump with ARC Composite Coatings



After – Repair of Pump with ARC Composite Coatings



Before – Reverse Engineering of Impeller



After – Reverse Engineering of Impeller

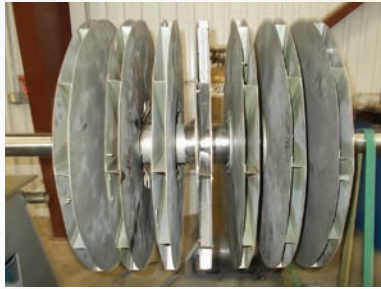


Repair of Blowers, Mixers, Gearboxes, and More

Chesterton® Services offers repair and upgrade services on a wide array of rotating equipment including, but not limited to, blowers, fans, mixers, screws, and agitators.

Our depth of experience in protective coatings, lubrication systems, and shaft and bearing sealing systems all offer opportunities to improve reliability and maximize overall equipment effectiveness (OEE).

Blower in its Repair Stages with 4400 Gas Seals



Chesterton® Services Minden, Louisiana



Our Louisiana facility opened in 2015. We are housed in a 27,500 square foot facility with:

- 20 ton overhead cranes (2 each)
- 10 ton overhead cranes (2 each)

10204 HWY 80, Minden, Louisiana 71055
Office: (318) 869-6232

Chesterton® Services Houston, Texas



Our Texas facility opened in 2017. We are housed in a 36,000 square foot climate controlled facility with:

- One 5 ton overhead crane
- One 10 ton overhead crane

5808 Genoa-Red Bluff, Pasadena, TX 77507
Office: (713) 920-5252



Chesterton ISO certificates available on chesterton.com/corporate/iso

Technical data reflects results of laboratory tests and is intended to indicate general characteristics only. A.W. Chesterton Company disclaims all warranties express, or implied, including warranties of merchantability and fitness for a particular purpose. Liability, if any, is limited to product replacement only. Any images contained herein are for general illustrative or aesthetic purposes only and are not intended to convey any instructional, safety, handling or usage information or advice respecting any product or equipment. Please refer to relevant Safety Data Sheets, Product Data Sheets, and/or Product Labels for safe use, storage, handling, and disposal of products, or consult with your local Chesterton sales representative.

© 2025 A.W. Chesterton Company.

® Registered trademark owned and licensed by A.W. Chesterton Company in USA and other countries, unless otherwise noted.

Distributed by: