

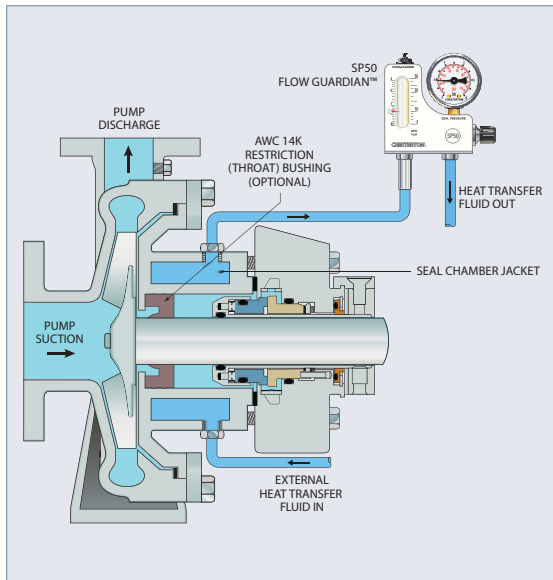
PLAN 2

Cooling Jacket/Dead-Ended Seal Chamber

What External jacketed seal chamber.
Dead-ended seal with no internal recirculation of pumped fluid.

Why For cooling or heating process fluid.

When Sealing fluids that are affected by temperature, for example, hot fluids or fluids that need heating to promote flow.

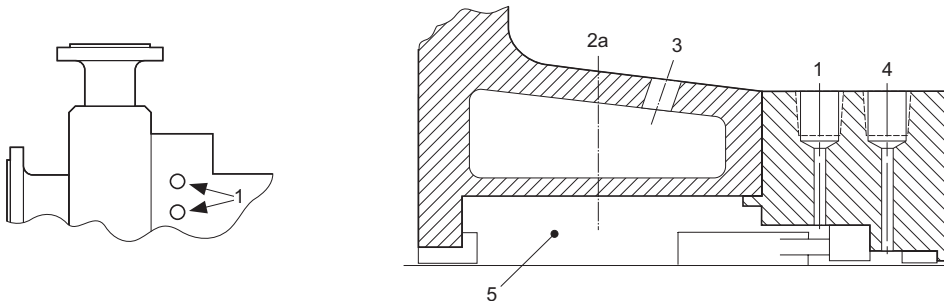


KEY

- 1 — Plugged Connections for Possible Future Circulating Fluid
- 2 — Vent (V), if Required
- 3 — Heating/Cooling Inlet (HI or CI), Heating/Cooling Outlet (HO or CO)
- 4 — Quench/Drain (Q/D)
- 5 — Seal Chamber

NOTES

- a — Self-venting arrangements preferred on horizontal pumps



Drawing reproduced from ANSI/API Standard 682, Third Edition, September 2004, courtesy of the American Petroleum Institute.