

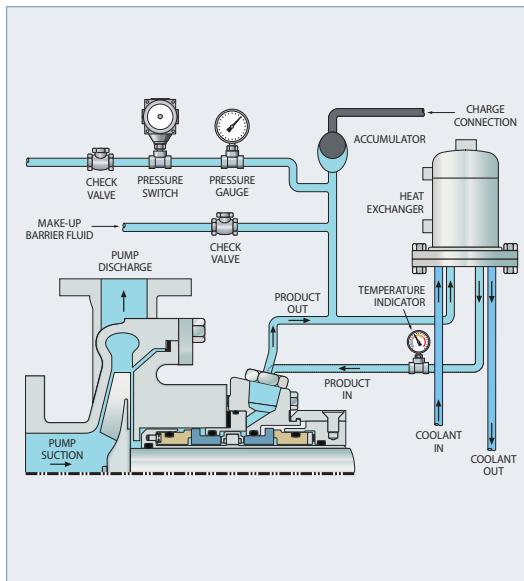
PLAN 53B

Closed Loop with Heat Exchanger and Accumulator

What Dual seal arrangement. A pressurized, external clean fluid is delivered to the seal via an external bladder-type accumulator. A heat exchanger can be used when specified to cool the fluid.

Why To cool the inboard and outboard seal faces; to provide clean lubrication to the inboard and outboard seal faces; to protect against solids penetrating and damaging the inboard seal faces.

When Used with hazardous products and/or products with high solids content; used when an automated Plan 53 is desired; used when sealing process fluids with low vapor pressure; used with low-viscosity, non-lubricating process fluids; used when the required barrier fluid pressure is higher than 10 bar (150 psi); prevents gas source from contaminating barrier fluid.

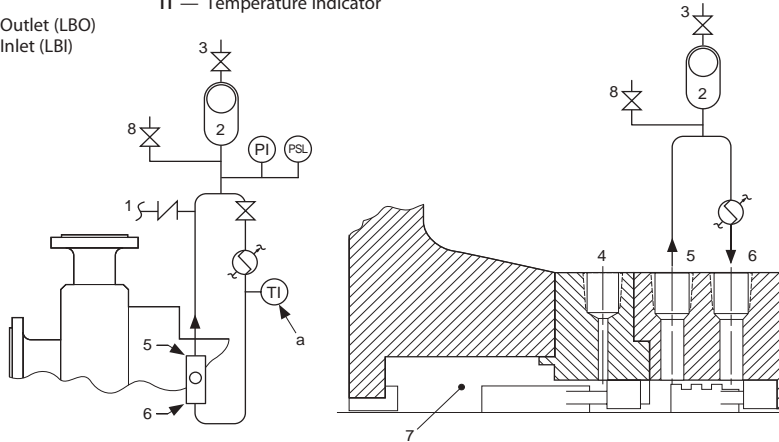


KEY

- | | |
|---------------------------------|----------------------------|
| 1 — Make-up Barrier Fluid | 8 — Vent |
| 2 — Bladder Accumulator | PI — Pressure Indicator |
| 3 — Bladder Charge Connection | PSL — Pressure Switch Low |
| 4 — Flush (F) | TI — Temperature Indicator |
| 5 — Liquid Barrier Outlet (LBO) | |
| 6 — Liquid Barrier Inlet (LBI) | |
| 7 — Seal Chamber | |

NOTES

- a — If specified



Drawing reproduced from ANSI/API Standard 682, Third Edition, September 2004, courtesy of the American Petroleum Institute.