

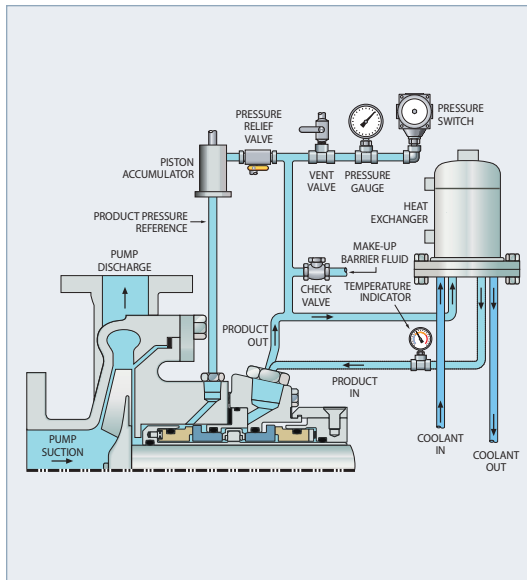
## PLAN 53C

### Heat Exchanger and Piston Accumulator

**What** Dual seal arrangement. A pressurized, external clean fluid is delivered to the seal via an external piston-type accumulator. A heat exchanger can be used when specified to cool the fluid.

**Why** To cool the inboard and outboard seal faces; to provide clean lubrication to the inboard and outboard seal faces; to protect against solids penetrating and damaging the inboard seal faces.

**When** Used to closely regulate barrier fluid pressure with respect to seal chamber pressure; used with hazardous products and/or products with high solids content; used when an automated Plan 53 is desired; used when sealing process fluids with low vapor pressure; used with low-viscosity, non-lubricating process fluids.



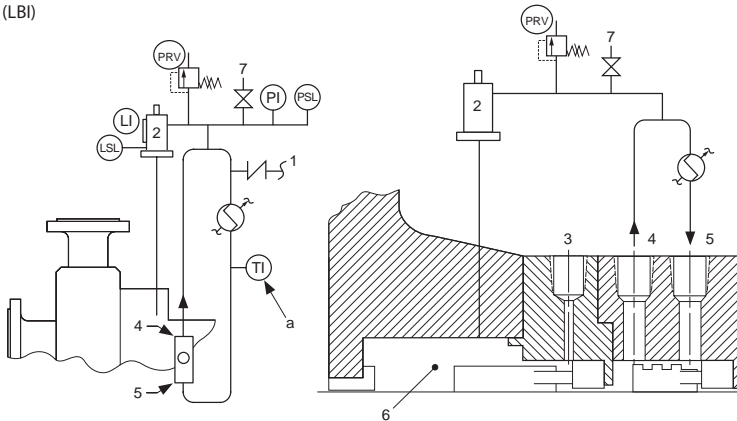
**KEY**

- 1 — Make-up Barrier Fluid
- 2 — Piston Accumulator
- 3 — Flush (F)
- 4 — Liquid Barrier Outlet (LBO)
- 5 — Liquid Barrier Inlet (LBI)
- 6 — Seal Chamber
- 7 — Vent
- LI — Level Indicator
- LSL — Level Switch Low

- PI — Pressure Indicator
- PRV — Pressure Relief Valve
- PSL — Pressure Switch Low
- TI — Temperature Indicator

**NOTES**

- a — If specified



*Drawing reproduced from ANSI/API Standard 682, Third Edition, September 2004, courtesy of the American Petroleum Institute.*