

Chesterton® PLAN 53P

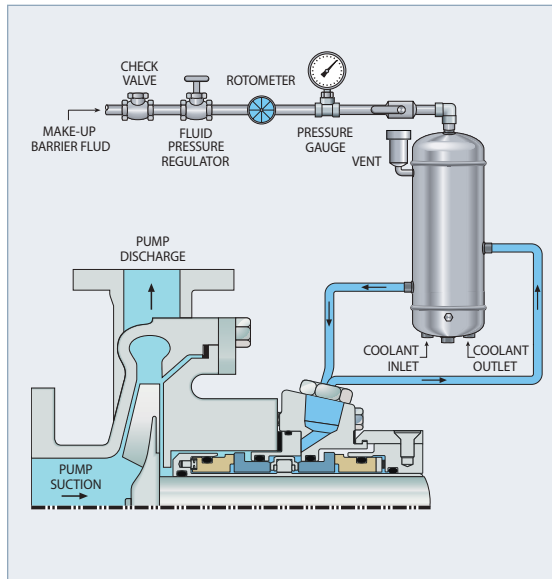
Circulation with Pressurized External Barrier Fluid Tank

What Dual seal arrangement used with an automatic make-up tank. A pressurized, external fluid source provides clean fluid to the seal via an external pressure reservoir. This plan has been developed by Chesterton.

Why To provide a barrier of clean fluid to lubricate the inboard and outboard seal faces; to protect against solids penetrating and damaging the inboard seal faces.

When Used in products with high solids content; used when cooling is a primary requirement; can be used to heat the seal; used when a secure source of external fluid is available.

Note: Tank should be installed at least 0.3 M (1 ft.) above seal and at most 1.2 M (4 ft.) away. Piping should be continuously ascending with minimized bends.



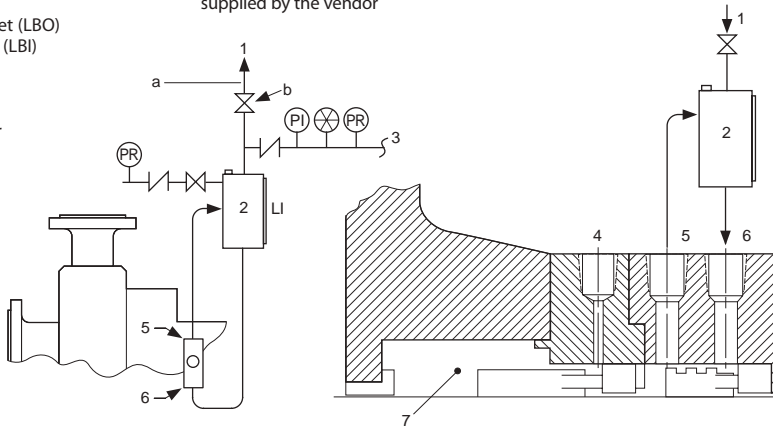
KEY

- 1 — From External Pressure Source
- 2 — Reservoir
- 3 — Make-up Buffer Fluid
- 4 — Flush (F)
- 5 — Liquid Barrier Outlet (LBO)
- 6 — Liquid Barrier Inlet (LBI)
- 7 — Seal Chamber
- LI — Level Indicator
- PI — Pressure Indicator
- PR — Pressure Regulator

NOTES

- a — Items above this line are the responsibility of the purchaser;
- items below this line shall be supplied by the vendor

b — Normally closed



Drawing reproduced from ANSI/API Standard 682, Third Edition, September 2004, courtesy of the American Petroleum Institute.