

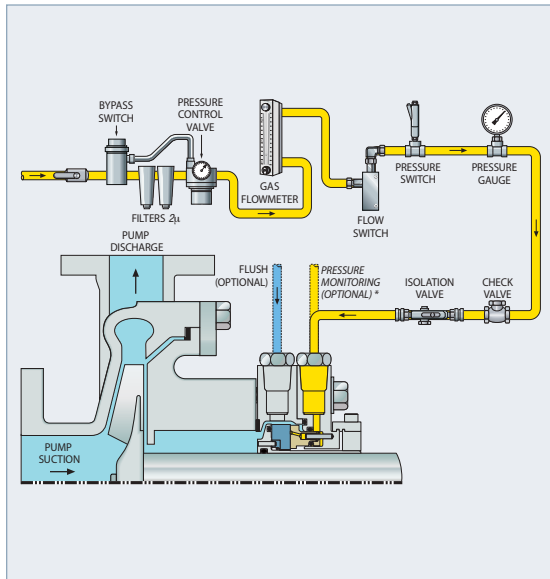
PLAN 74

Externally Supplied Barrier Gas

What A barrier gas provided for a gas seal at a pressure higher than process.

Why To promote face lift-off and non-contact gas sealing. Also prevents process fluid from leaking into the atmosphere.

When Gas sealing is the requirement for difficult applications; use with process fluids with low vapor pressure or fluids with poor lubricating properties.



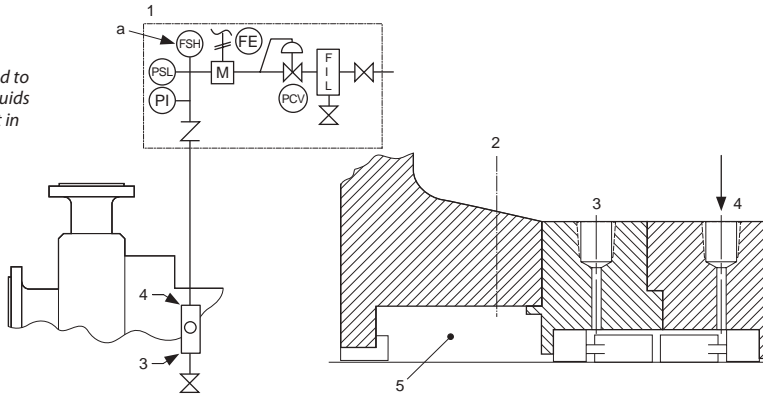
KEY

- 1 — Gas Barrier Panel
- 2 — Vent (If Required)
- 3 — Gas Barrier Outlet (Normally Closed) – Used only to depressurize seal chamber.
- 4 — Gas Barrier Inlet
- 5 — Seal Chamber
- FE — Flow Meter
- FIL — Coalescing Filter – Used to ensure solids and/or liquids which might be present in barrier gas do not contaminate seals.
- FSH — Flow Switch High
- M — Monitoring
- PI — Pressure Indicator

- PCV — Pressure Control Valve –
Set pressure above process side of inner seal.
- PSL — Pressure Switch Low

NOTES

- a — If specified



Drawing reproduced from ANSI/API Standard 682, Third Edition, September 2004, courtesy of the American Petroleum Institute.